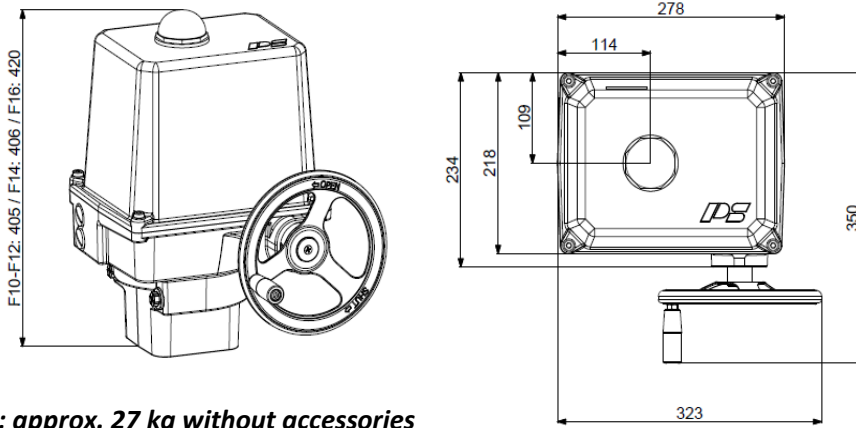


Electric Quarter Turn Actuator

PSQ703



700 Nm
Switching Torque)¹

29 s - 93 s
Operating Time/90°

Flange
F10/F12/F14/F16

Modulating Actuator
Class C
EN ISO 22153

Enclosure IP67
EN 60529

weight: approx. 27 kg without accessories

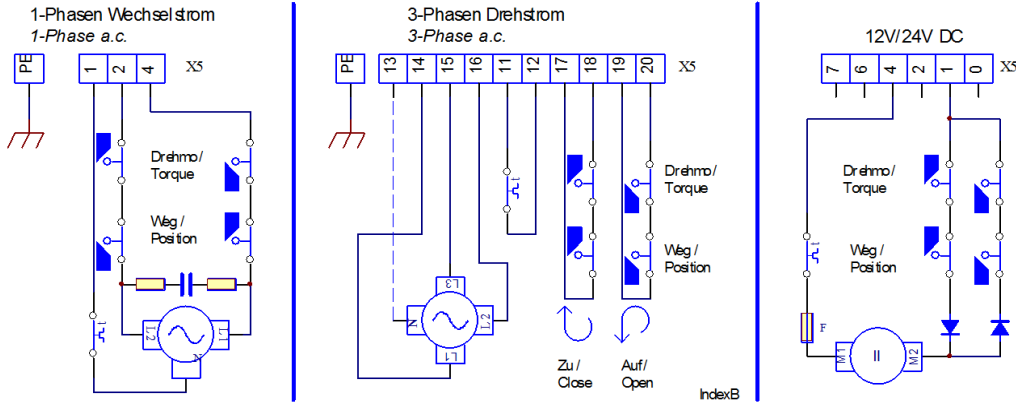
Operating Time/90°	29s [50Hz] / 24s [60Hz]			40s / 34s		PSQ703 700 Nm
Power Supply [V]	230 VAC 1~	115 VAC 1~	24 VAC 1~	400 V 3~	24 VDC	
Frequency [Hz]	50 / 60	50 / 60		50 / 60		
Rated Current [A]	1.4	2.6		0.41		
Maximum Current [A]	1.9	3.7		1.1		
Power Consumption) ² [W]	290	275		200		
Duty Cycle IEC 60034-1	S2 15min / S4 50% ED - 1200c/h			see left		
Ambient Temperature [°C]	-20°C to +80°C (S2) / -20°C to +60°C (S4)			see left		
Overvoltage Category	II			see left		
Motor Protection	Thermo Switch) ³			see left		
Operating Time/90°	43s [50Hz] / 36s [60Hz]			60s / 50s	43 s	PSQ703 700 Nm
Power Supply [V]	230 VAC 1~	115 VAC 1~	24 VAC 1~	400 V 3~	24 VDC	
Frequency [Hz]	50 / 60	50 / 60	50 / 60	50 / 60	-	
Rated Current [A]	0.75	1.4	8	0.4	4.5	
Maximum Current [A]	0.98	1.9	9	1.1	50	
Power Consumption) ² [W]	175	158	190	180	110	
Duty Cycle IEC 60034-1	S2 30min / S4 50% ED - 1200c/h					
Ambient Temperature [°C]	-20°C to +80°C (S2) / -20°C to +60°C (S4)					
Low Temperature Version	-40°C to +60°C optional					
Overvoltage Category	II					
Motor Protection	Thermo Switch) ³				Multifuse	
Operating Time/90°	93s [50Hz] / 77s [60Hz]					PSQ703 700 Nm
Power Supply [V]	230 VAC 1~	115 VAC 1~	24 VAC 1~	400 V 3~	24 VDC	
Frequency [Hz]	50 / 60	50 / 60	50 / 60	50 / 60		
Rated Current [A]	0.37	0.7	3.5	0.18		
Maximum Current [A]	0.44	0.84	4.2	0.22		
Power Consumption) ² [W]	83	98	82	83		
Duty Cycle IEC 60034-1	S2 30min / S4 50% ED @ 1200c/h					
Ambient Temperature [°C]	-20°C to +80°C (S2) / -20°C to +60°C (S4)					
Low Temperature Version	-40°C to +60°C optional					
Overvoltage Category	II					
Motor Protection	Thermo Switch) ³					

)¹ = Permissible average thrust over the entire travel is 50% of the max. thrust

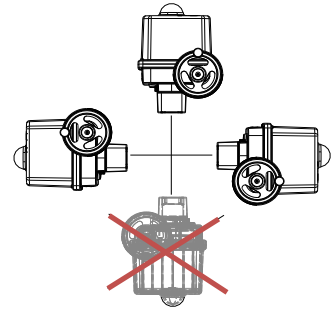
)² = at switching torque and 50 Hz

)³ = Thermo switch must be wired externally at 400 VAC 3~

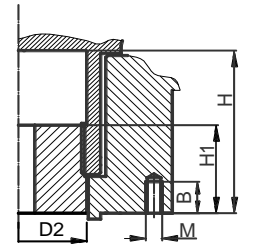
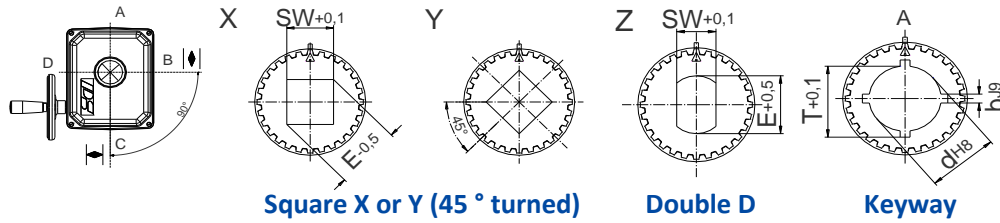
Wiring Diagramm



Mounting Position



Available Drive Bushes



	F10	F12
D2	66	66
H	80	80
H1	48	48
M	M10	M12
B	18	18

F10 without centering ring!

Please check drive bushes datasheet for available sizes!
Other customized drive bushes on request!

Accessories/ Options	Power Supply	230 VAC 1~	115 VAC 1~	24 VAC 1~	400 V 3~	24 VDC	
	Add'l Position Switch 2WE	•	•	•	•	•	
	Add'l Position Switches Gold	•	•	•	•	•	
	Add'l Torque Switches 2DE	•	•	•	•	•	
	Add'l Torque Switches Gold	•	•	•	•	•	
	Positioner PSAP	•	•) ⁴	•) ⁴	•) ⁵		
	Position Transmitter PSPT	•	•	•	•	•	
	Space Heater HR	•	•	•	•) ⁶	•	
	Potentiometer PD	•	•	•	•	•	
	Reversing Starter Contactor WSM 01				•		
	Increased enclosure IP	IP68) ⁷ incl. Heating Resistor and Corrosion Protection K2					

For more information and accessories, visit our website www.ps-automation.com!

• = available, for further information see respective datasheet

)⁴ = PSAP with external relay required

)⁵ = only to be used with reversing starter contactor

)⁶ = supply voltage 24 V or 115-230 V possible

)⁷ = IP68, no ingress of dust and suitable for continuous immersion in water up to 6 m and 96 h

Subject to changes!