

Electric Quarter Turn Actuator

PSQ503

500 Nm

Switching Torque)¹

29 s - 93 s

Operating Time/90°

Flange

F10/F12/F14/F16

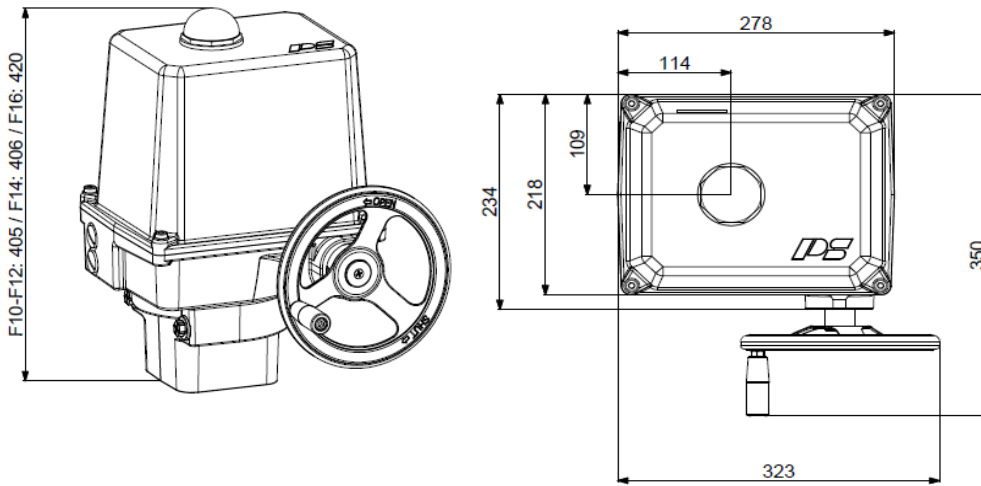
Modulating Actuator

Class C

EN ISO 22153

Enclosure IP67

EN 60529



weight: approx. 27 kg without accessories

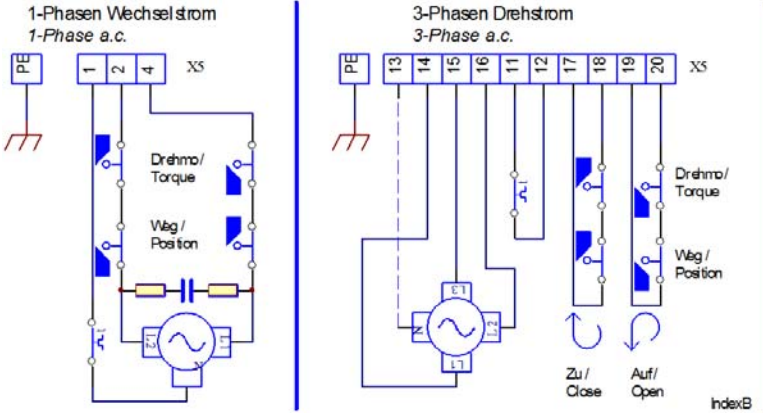
Operating Time/90°	29 s [50 Hz] / 24 s [60 Hz]			40 s / 34 s		PSQ503 500Nm
Power Supply [V]	230 VAC 1~	115 VAC 1~	24 VAC 1~	400 V 3~	24 VDC	
Frequency [Hz]	50 / 60	50 / 60		50 / 60		
Rated Current [A]	0.75	1.25		0.4		
Maximum Current [A]	1	1.9		1.1		
Power Consumption) ² [W]	170	130		180		
Duty Cycle IEC 60034-1	S2 15min / S4 50% ED - 1200c/h			see left		
Ambient Temperature [°C]	-20°C to +80°C (S2) / -20°C to +60°C (S4)			see left		
Overvoltage Category	II			see left		
Motor Protection	Thermo Switch) ³			see left		
Operating Time/90°	43 s [50 Hz] / 36 s [60 Hz]			60 s / 50 s	43 s	PSQ503 500Nm
Power Supply [V]	230 VAC 1~	115 VAC 1~	24 VAC 1~	400 V 3~	24 VDC	
Frequency [Hz]	50 / 60	50 / 60	50 / 60	50 / 60	-	
Rated Current [A]	0.52	1.1	6.4	0.45	3.8	
Maximum Current [A]	0.95	1.9	9	1.1	33	
Power Consumption) ² [W]	120	114	140	220	90	
Duty Cycle IEC 60034-1	S2 30min / S4 50% ED - 1200c/h					
Ambient Temperature [°C]	-20°C to +80°C (S2) / -20°C to +60°C (S4)					
Overvoltage Category	II					
Motor Protection	Thermo Switch) ³				Multifuse	
Operating Time/90°	93 s [50 Hz] / 77 s [60 Hz]					PSQ503 500Nm
Power Supply [V]	230 VAC 1~	115 VAC 1~	24 VAC 1~	400 V 3~	24 VDC	
Frequency [Hz]	50 / 60	50 / 60	50 / 60	50 / 60		
Rated Current [A]	0.37	0.87	3.5	0.18		
Maximum Current [A]	0.44	1.0	4.2	0.22		
Power Consumption) ² [W]	83	98	82	75		
Duty Cycle IEC 60034-1	S2 15min / S4 50% ED - 1200c/h					
Ambient Temperature [°C]	-20°C to +80°C (S2) / -20°C to +60°C (S4)					
Overvoltage Category	II					
Motor Protection	Thermo Switch) ³					

)¹ = Permissible average thrust over the entire travel is 50% of the max. thrust

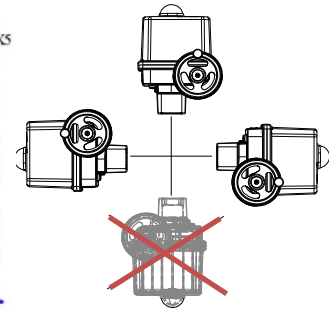
)² = at switching torque and 50 Hz

)³ = Thermo switch must be wired externally at 400 VAC 3~

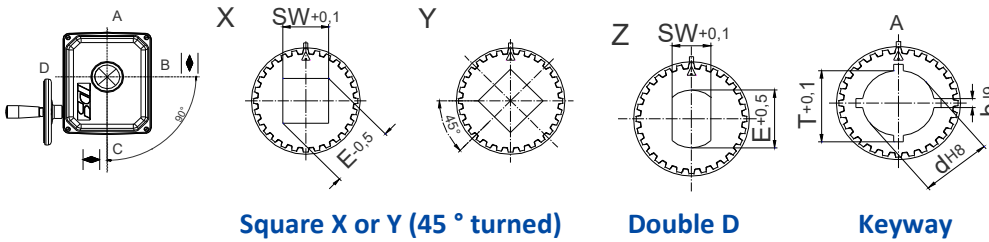
Wiring Diagramm



Mounting Position



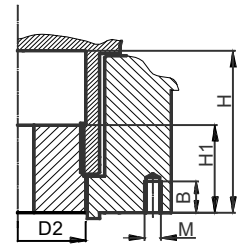
Available Drive Bushes



Square X or Y (45° turned)

Double D

Keyway



	F10	F12
D2	66	66
H	80	80
H1	48	48
M	M10	M12
B	18	18

F10 without centering ring!

Please check drive bushes datasheet for available sizes!
Other customized drive bushes on request!

Accessories/ Options	Power Supply	230 VAC 1~	115 VAC 1~	24 VAC 1~	400 V 3~	24 VDC
	Add'l Position Switch: 2WE	•	•	•	•	•
	Add'l Position Switches Gold	•	•	•	•	•
	Add'l Torque Switch: 2DE	•	•	•	•	•
	Add'l Torque Switches Gold	•	•	•	•	•
	Positioner PSAP	•	•) ⁴	•) ⁴	•) ⁵	
	Position Transmitter PSPT	•	•	•	•	•
	Space Heater HR	•	•	•	•) ⁶	•
	Potentiometer PD	•	•	•	•	•
	Reversing Starter WSM				•	
Contactor 01						
Increased enclosure IP	IP68) ⁷ incl. Heating Resistor and Corrosion Protection K2					

For more information and accessories, visit our website www.ps-automation.com!

• = available, for further information see respective datasheet

)⁴ = PSAP with external relay required

)⁵ = only to be used with reversing starter contactor

)⁶ = supply voltage 24 V or 115-230 V possible

)⁷ = IP68, no ingress of dust and suitable for continuous immersion in water up to 6 m and 96 h

Subject to changes!