

Electric Quarter Turn Actuator

PSQ2003
PSQ2803

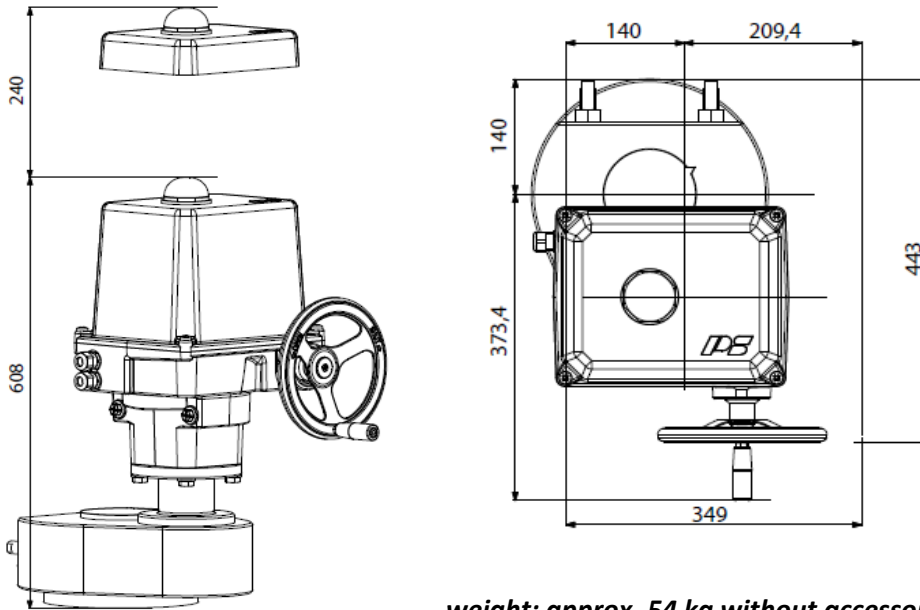
2000 / 2800 Nm
Switching Torque)¹

120 s - 172 s
Operating Time/90°

Flange
F16

Modulating Actuator
Class C
EN ISO 22153

Enclosure IP67
EN 60529



weight: approx. 54 kg without accessories

Operating Time/90°	120 s [50 Hz]/100 s [60 Hz]	160 s/133 s	172 s/144 s	172 s
Power Supply [V]	230 VAC 1~	115 VAC 1~	400 V 3~	24 VAC 1~ 24 VDC
Frequency [Hz]	50 / 60	50 / 60	50 / 60	-
Rated Current [A]	0.9	3	0.5	7.7 3.8
Maximum Current [A]	1.2	4.4	1.3	9 50
Power Consumption) ² [W]	204	318	216	168 96
Duty Cycle IEC 60034-1	S2 15 min / S4 50% ED - 1200 c/h		S2 30 min / S4 50% ED 1200 c/h	
Ambient Temperature [°C]	-20°C to +80°C (S2) / -20°C to +60°C (S4)			
Overvoltage Category	II			
Motor Protection	Thermo Switch) ³			Multifuse

PSQ2003

Operating Time/90°	120 s [50 Hz]/100 s [60 Hz]	160 s/133 s	172 s/144 s	172 s
Power Supply [V]	230 VAC 1~	115 VAC 1~	400 V 3~	24 VAC 1~ 24 VDC
Frequency [Hz]	50 / 60	50 / 60	50 / 60	-
Rated Current [A]	1.6	3	0.5	9 5
Maximum Current [A]	2.2	4.2	1.3	9 50
Power Consumption) ² [W]	290	275	200	190 130
Duty Cycle IEC 60034-1	S2 15 min / S4 50% ED - 1200 c/h		S2 30 min / S4 50% ED 1200 c/h	
Ambient Temperature [°C]	-20°C to +80°C (S2) / -20°C to +60°C (S4)			
Overvoltage Category	II			
Motor Protection	Thermo Switch) ³			Multifuse

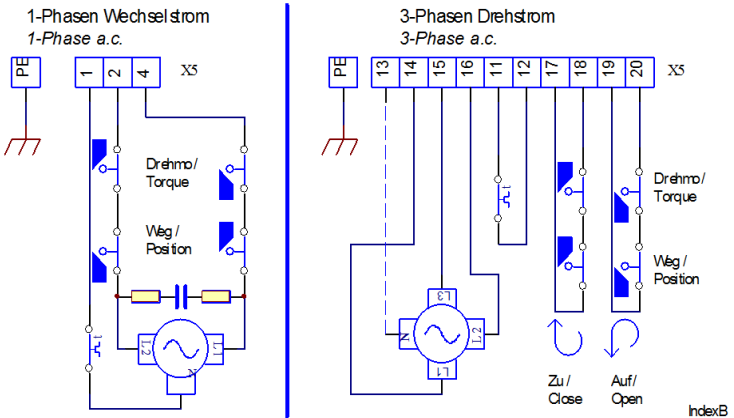
PSQ2803

)¹ = Permissible average thrust over the entire travel is 50% of the max. thrust

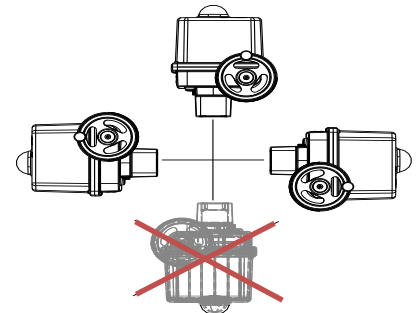
)² = at switching torque and 50 Hz

)³ = Thermo switch must be wired externally at 400 VAC 3~

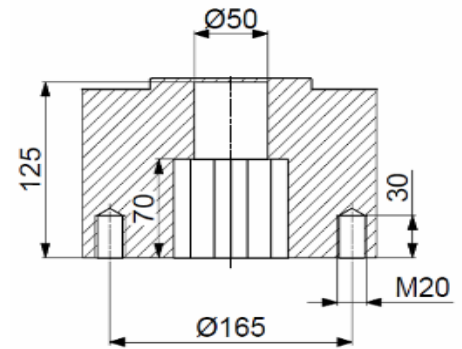
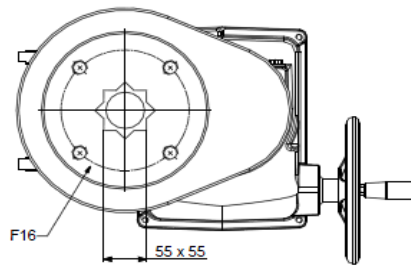
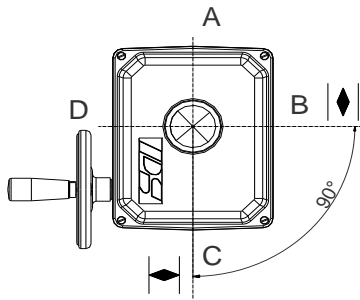
Wiring Diagramm



Mounting Position



Mechanical Connection



Accessories/ Options	Power Supply	230 VAC 1~	115 VAC 1~	24 VAC 1~	400 V 3~	24 VDC
	Add'l Position Switches 2WE	•	•	•	•	•
	Add'l Position Switches 2WE Gold	•	•	•	•	•
	Add'l Torque Switches 2DE	•	•	•	•	•
	Add'l Torque Switches 2DE Gold	•	•	•	•	•
	Positioner PSAP	•	•) ⁴	•) ⁴	•) ⁵	
	Position Transmitter PSPT	•	•	•	•	•
	Space Heater HR	•	•	•	•) ⁶	•
	Potentiometer PD	•	•	•	•	•
	Reversing Starter Contactor WSM 01				•	

For more information and accessories, visit our website www.ps-automation.com!

• = available, for further information see respective datasheet

)⁴ = PSAP with external relay required

)⁵ = only to be used with reversing starter contactor

)⁶ = supply voltage 24 V or 115-230 V possible

Subject to changes!