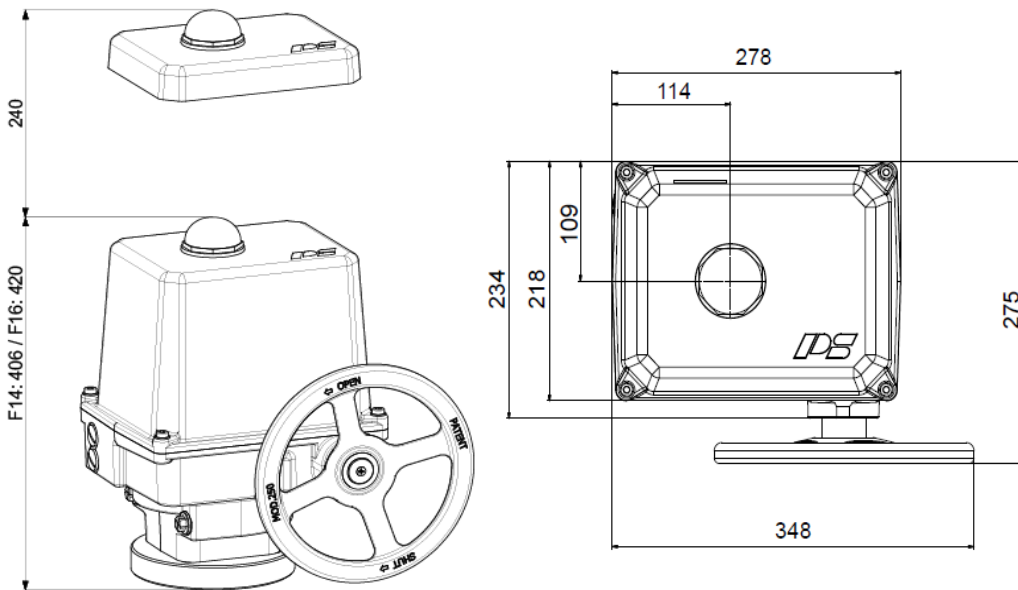


# Electric Quarter Turn Actuator

**PSQ1503**



**weight: approx. 27 kg without accessories**

**1500 Nm**  
Switching Torque )<sup>1</sup>

**60s / 75s / 80s / 90s**  
Operating Time/90°

**Flange**  
**F14/F16**

**Modulating Actuator**  
**Class C**  
EN ISO 22153

**Enclosure IP67**  
EN 60529

Operating Time/90°	75 s [50 Hz] / 63 s [60 Hz]	90 s	80 s	60 s	
Power Supply [V]	230 VAC 1~	115 VAC 1~	24 VAC 1~	400 V 3~	24 VDC
Frequency [Hz]	50 / 60	50 / 60	50 / 60	50 / 60	-
Rated Current [A]	0,8	1,7	6,3	0,4	6
Maximum Current [A]	1	2	8	1	50
Power Consumption ) <sup>2</sup> [W]	180	180	150	180	150
Duty Cycle IEC 60034-1	S2 15min / S4 50% ED @ 1200c/h				
Ambient Temperature [°C]	-20°C to +80°C (S2) / -20°C to +60°C (S4)				
Overtoltage Category	II				
Motor Protection	Thermo Switch ) <sup>3</sup>			Multifuse	

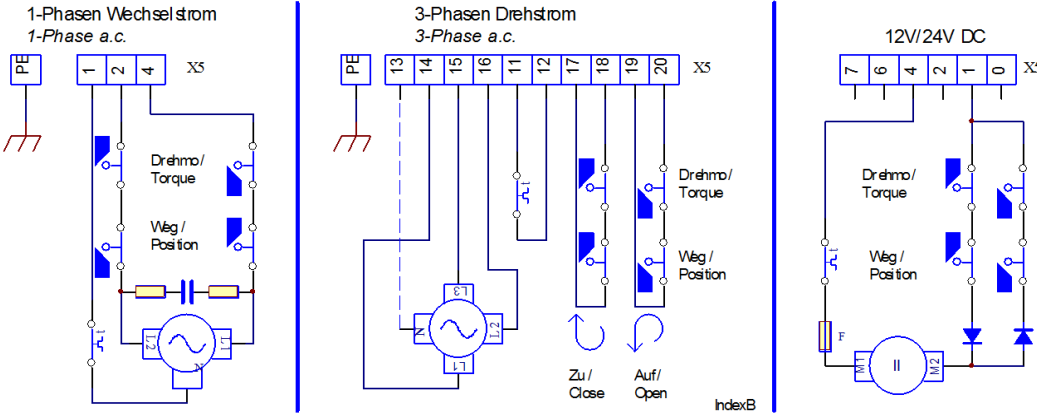
**PSQ1503**  
**1500 Nm**

)<sup>1</sup> = Permissible average thrust over the entire travel is 50% of the max. thrust

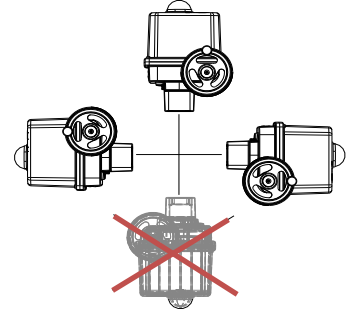
)<sup>2</sup> = at switching torque and 50 Hz

)<sup>3</sup> = Thermo switch must be wired externally at 400 VAC 3~

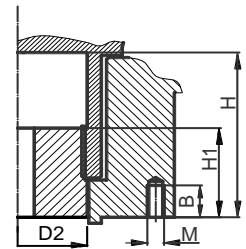
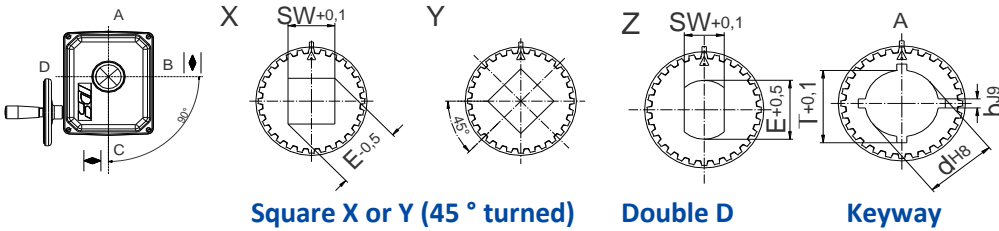
## Wiring Diagramm



## Mounting Position



## Available Drive Bushes



Please check drive bushes datasheet for available sizes!  
Other customized drive bushes on request!

	F12	F14	F16
D2	66	66	66
H	80	80	80
H1	46	46	46
M	M12	M16	M20
B	18	28	28

Accessories/ Options	Power Supply	230 VAC 1~	115 VAC 1~	24 VAC 1~	400 V 3~	24 VDC	
	Add'l Position Switches	2WE	•	•	•	•	•
	Add'l Position Switches	2WE	•	•	•	•	•
	Gold	Gold	•	•	•	•	•
	Add'l Torque Switches	2DE	•	•	•	•	•
	Add'l Torque Switches	2DE	•	•	•	•	•
	Gold	Gold	•	•	•	•	•
	Positioner	PSAP	•	•) <sup>4</sup>	•) <sup>4</sup>	•) <sup>5</sup>	
	Position Transmitter	PSPT	•	•	•	•	•
	Space Heater	HR	•	•	•	•) <sup>6</sup>	•
Potentiometer	PD	•	•	•	•	•	
Reversing Starter	WSM				•		
Contactors	O1						
Increased enclosure	IP	IP68 ) <sup>7</sup> incl. Heating Resistor and Corrosion Protection K2					

For more information and accessories, visit our website [www.ps-automation.com](http://www.ps-automation.com)!

• = available, for further information see respective datasheet

)<sup>4</sup> = PSAP with external relay required

)<sup>5</sup> = only to be used with reversing starter contactor

)<sup>6</sup> = supply voltage 24 V or 115-230 V possible

)<sup>7</sup> = IP68, no ingress of dust and suitable for continuous immersion in water up to 6 m and 96 h

Subject to changes!