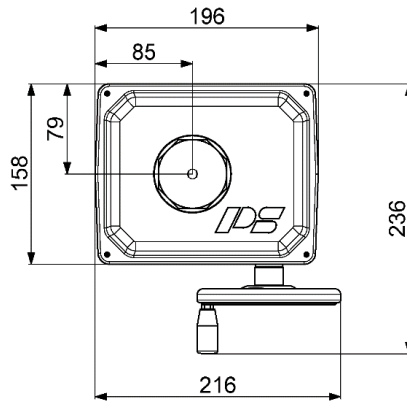
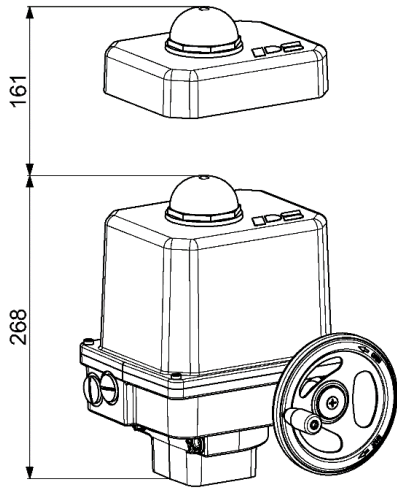


# Electric Quarter-Turn Actuator

**PSQ103**



130 Nm  
**Switching torque)<sup>1</sup>**

**32 - 65 s**

Op. Time/90°

**Flange  
F05 + F07**

Modulating Actuator  
**Class C**

acc. EN ISO 22153

**Enclosure IP67**  
EN 60529

**Approx. weight: 7.6 kg without accessories**

Operating Time/90°	32 s [50 Hz] / 27 s [60 Hz]				36 s	PSQ103 130 Nm
Power Supply [V]	230 VAC 1~	115 VAC 1~	24 VAC 1~	400 V 3~	24 VDC	
Frequency [Hz]	50 / 60	50 / 60	50 / 60	50 / 60	-	
Normal Current [A]	0,27 / 0,23	0,57 / 0,5	2,7 / 2,3	0,12	1,3	
Maximum Current [A]	0,33 / 0,28	0,68 / 0,60	3,3 / 2,8	0,15	2,5	
Power Consumption ) <sup>2</sup> [W]	62 / 53	64 / 55	62 / 52	51	30	
Duty Cycle IEC 60034-1,8	S2 30 min / S4 50% ED - 1200c/h					
Ambient Temperature [°C]	-20°C to +80°C (S2) / -20°C to +60°C (S4)					
Low Temperatur Version	-40°C to +60°C optional					
Overvoltage Category	II					
Motor Protection	Thermo Switch ) <sup>3</sup>				Multifuse	

Operating Time/90°	57 s [50 Hz] / 47 s [60 Hz]				65 s	PSQ103 130 Nm
Power Supply [V]	230 VAC 1~	115 VAC 1~	24 VAC 1~	400 V 3~	24 VDC	
Frequency [Hz]	50 / 60	50 / 60	50 / 60	50 / 60	-	
Normal Current [A]	0.11	0.33	1.0	0.07	0.7	
Maximum Current [A]	0.13	0.4	1.3	0.1	2.5	
Power Consumption ) <sup>2</sup> [W]	25	37	25	30	24	
Duty Cycle IEC 60034-1,8	S2 30 min / S4 50% ED - 1200c/h					
Ambient Temperature [°C]	-20°C to +80°C (S2) / -20°C to +60°C (S4)					
Overvoltage Category	II					
Motor Protection	Thermo Switch ) <sup>3</sup>				Multifuse	

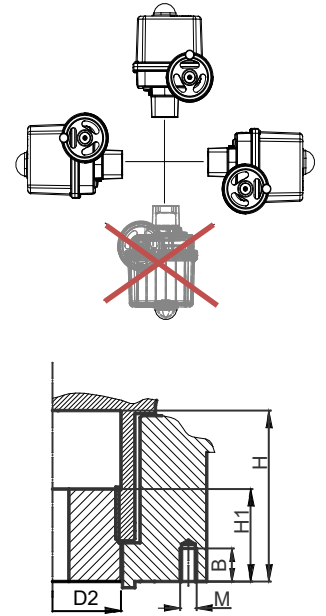
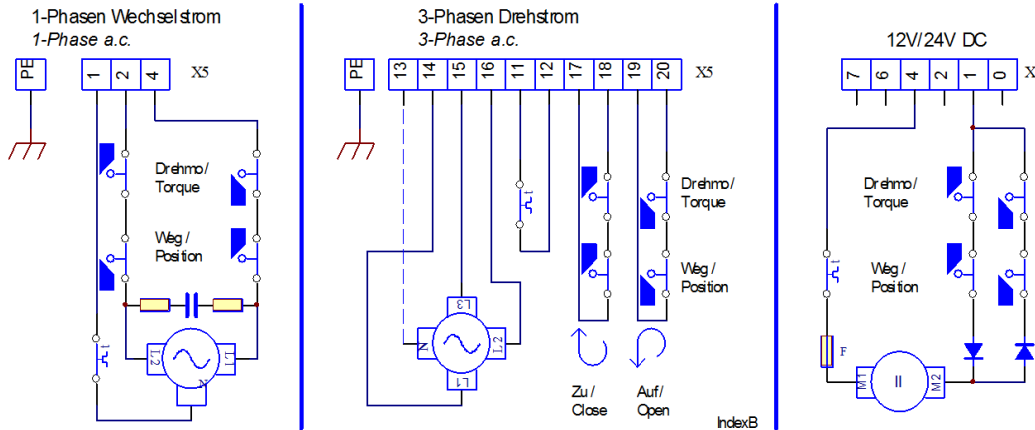
)<sup>1</sup> = Permissible average thrust over the entire travel is 50% of the max. thrust

)<sup>2</sup> = at switching torque and 50 Hz

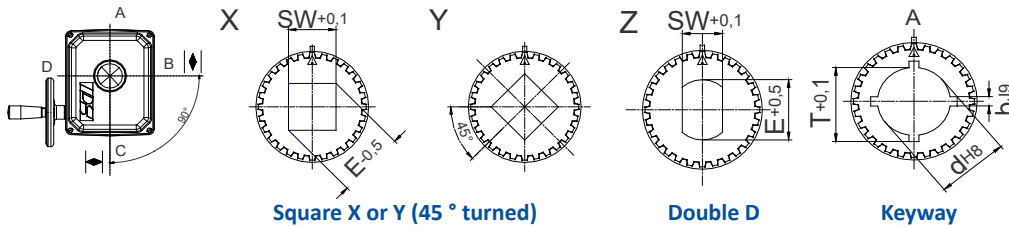
)<sup>3</sup> = Thermo switch must be wired externally at 400 VAC 3~

Electrical Connection Plan

Mounting Position



Available Drive Bushes



	F05	F07
D2	38	38
H	44	44
H1	35	35
M	M6	M18
B	12	16

Please check the drive bushes datasheet for the available sizes!  
Other customized drive bushes on request!

Accessories/Options	Power Supply	230 VAC 1~	115 VAC 1~	24 VAC 1~	400 V 3~	24 VDC	
	Add'l Position Switches	2WE	•	•	•	•	
	Add'l Position Switches	2WE	•	•	•	•	
	Gold	Gold					
	Add'l Torque Switches	2DE	•	•	•	•	
	Add'l Torque Switches	2DE	•	•	•	•	
	Gold	Gold					
	Positioner	PSAP	•	•	• ) <sup>4</sup>	• ) <sup>5</sup>	
	Position Transmitter	PSPT	•	•		•	•
	Heating Resistor	HR	•	•	•	• ) <sup>6</sup>	•
	Potentiometer	PD	•	•	•	•	•
	Reversing Starter Contactor	WSM01				•	
Corrosion Protection	K2	Increased corrosion protection incl. heating resistor					
Increased enclosure	IP	IP68 ) <sup>7</sup> incl. heating resistor and corrosion protection K2					

• available, for further information see respective datasheet  
<sup>4</sup> = PSAP with external relay required (Version .../R)  
<sup>5</sup> = only to be used with reversing starter contactor  
<sup>6</sup> = supply voltage 24 V or 115-230 V possible  
<sup>7</sup> = IP68, no ingress of dust and suitable for continuous immersion in water up to 6 m and 96 h

For more information and accessories, please visit our website [www.ps-automation.com](http://www.ps-automation.com)!

Subject to changes!