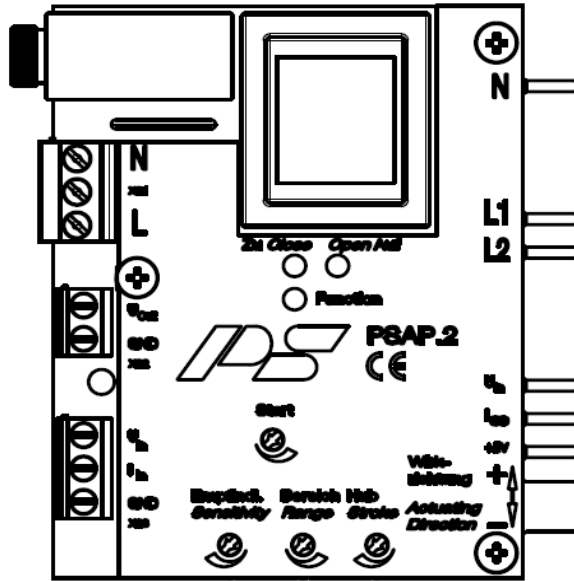


Positioner Card for PSL/PSQ/PSR

PSAP



Analogue Positioner Card for 230VAC/115VAC/24VAC

easily retrofitable

PSAP.2A

Input 0(4)-20mA / 0(2)-10V Output 0-10V

PSAP.3

Input 4-20mA / 2-10V
0(4)-20mA / 0-10V
Active Current Feedback

requires potentiometer
PD 210 1 kOhm or
PD2 210 2x1 kOhm

Positioner Card	PSAP.2A			PSAP.2A - R (for 24, 115, 230, 400 VAC with a current >1A)	PSAP.2A
Input Signal	0(4)-20mA / 0(2)-10V				
Output Signal	0-10V				
Impedance	I_{in} : 100 Ohm / U_{in} : 50 kOhm; U_{out} : > 10 kOhm				
Sensitivity Range	deadband adjustable from $\pm 0,5\%$ up to $\pm 5\%$				
Repeatability	0,5%				
Ambient Temperature	-20°C to +60°C				
Supply Voltage	230 VAC	115 VAC	24 VAC	24, 115, 230, 400 VAC $I = >1A$	
Positioner Card with Wire Breakage Detection	PSAP.3			PSAP.3 - R (for 24, 115, 230, 400 VAC with a current >1A)	PSAP.3
Input Signal	4-20mA / 2-10V				
Output Signal	0(4)-20mA / 0-10V				
Impedance	I_{in} : 100 Ohm / U_{in} : 50 kOhm; I_{out} : 300 Ohm / U_{out} : > 10 kOhm				
Sensitivity Range	deadband adjustable from $\pm 0,5\%$ up to $\pm 5\%$				
Repeatability	0,5%				
Ambient Temperature	-20°C to +60°C				
Supply Voltage	230 VAC	115 VAC	24 VAC	24, 115, 230, 400 VAC $I = >1A$	
Safety function (only PSAP.3)	In case of a signal failure a safety position can be aimed for. These following options can be set via jumper: open valve, Actuator STOP, close valve				

**Positioner PSAP.2A and PSAP.3 also usable with 3~ actuators.
This is only possible in combination with a reversing contactor.
For this version, please contact us!**